

1900S HANDSFREE

1-DOG SYSTEM ONLY

Owner's Manual

Please read this manual thoroughly
before operating the 1900S HANDSFREE training collar.

IMPORTANT SAFETY AND PRODUCT INFORMATION

WARNING

Please read all safety and product information below before using your Dogtra product. Failure to follow these safety instructions could result in injury to you, your dog and others, or it could result in damage to your Dogtra product or other property.

PRODUCT SAFETY

Training Methods

Dogtra products may be used with a variety of training methods. However, each dog may have a different reaction to training methods and to Dogtra products. Closely observe your dog when determining the right training method to use with your Dogtra product.

Aggressive Dogs

Do not use Dogtra products with aggressive dogs as such dogs may react adversely and cause injury to people or other dogs. Seek the assistance of a dog-training specialist or veterinarian when dealing with aggressive dogs.

Children

Dogtra products are not toys. Adult supervision and close attention are necessary when Dogtra products are used by or near children.

PRODUCT DAMAGE

Electrical Product

Your Dogtra product contains electrical components and batteries. Do not use or keep your product near heat or flammable sources. Such use or storage may damage your

product and/or cause fire, explosion, injury, or property damage.

Medical Device Interference

Dogtra products contain electrical and magnetic components that emit low level electromagnetic waves and radio frequencies. These electromagnetic waves or radio frequencies may interfere with pacemakers, defibrillators, or other medical devices. Consult your physician or medical device maker before using your medical device with a Dogtra product. If you think that your Dogtra product is interfering with your pacemaker, defibrillator, or other medical device, stop using the Dogtra product.

Inadvertent Activation

The digital microprocessor offers thousands of unique codes to eliminate frequency match-up with other Dogtra e-collars. The Constant button will automatically shut down after being held down for 12 seconds or more as a safety feature.

UNAUTHORIZED USE

Your Dogtra product should be used only in a humane manner to train and educate your dog. Dogtra products are not intended for use in any other manner nor are they intended for use with other animals or with humans.

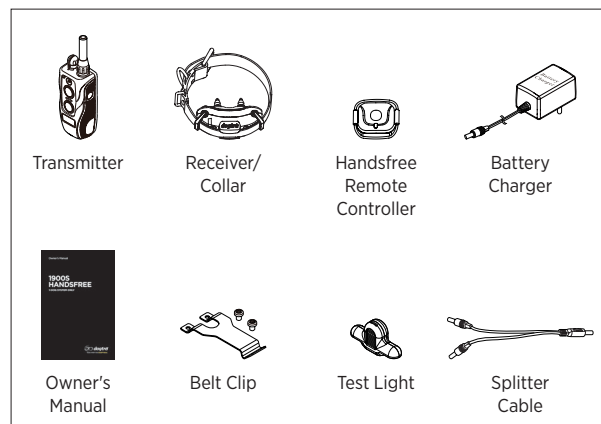
BATTERY

Your Dogtra product contains batteries. Take care when removing and installing batteries as your fingers may get caught. Dispose of batteries as provided by your local regulations. Do not disassemble, crush, heat, or otherwise alter the battery as it may cause fire, injury or property damage.

CONTENTS

AT A GLANCE	5
MAIN FEATURES	6
OVERVIEW	7
UNDERSTANDING YOUR TRAINING SYSTEM	
1. TURNING THE 1900S HANDSFREE ON/OFF	9
2. TRANSMITTER BUTTON FUNCTION	10
3. HANDSFREE INFORMATION	11
4. COLLAR FITTING	16
5. FINDING THE RIGHT STIMULATION	18
6. MAXIMIZING THE DISTANCE	19
7. LED INDICATOR	21
8. CHARGING THE BATTERY	22
9. HANDHELD TRANSMITTER LCD	25
10. ATTACHING THE BELT CLIP	27
11. USING THE TEST LIGHT	28
GENERAL TRAINING TIPS	30
MAINTENANCE	32
FCC WARNING	33
TROUBLESHOOTING GUIDE	34
WARRANTY AND REPAIR INFORMATION	36

AT A GLANCE



Optional Accessories

Auto Charger

Dogtra's auto chargers are designed for use with a 10 volt car outlet.

European Charger

Dogtra's European chargers are designed for use with a 230 volt AC electrical outlet.

To purchase accessories, please visit www.dogtra.com or call customer service at 1-888-811-9111.

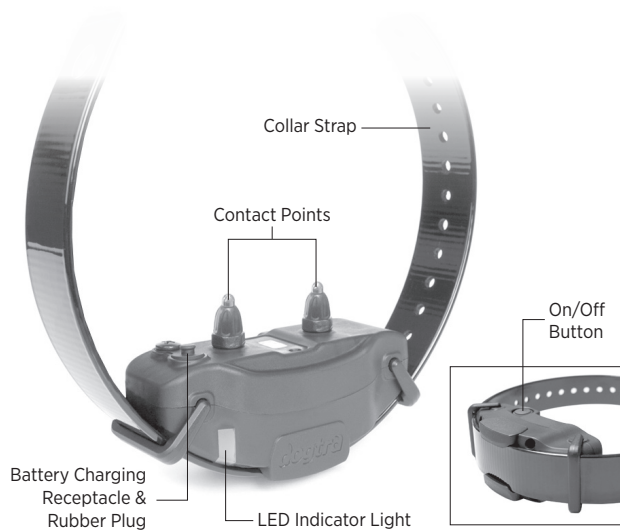
MAIN FEATURES

- Easy-to-use, ergonomically fitted transmitter
- Rheostat Dial that allows for gradual adjustments in stimulation intensity with no jumps between levels (0-127)
- Handsfree operation with Handsfree Remote Controller
- 3/4-mile range
- High output
- 2 different stimulation types - Nick & Constant
- New High Performance Pager (HPP) vibration feature
- 2-hour rapid charge lithium polymer batteries
- IPX9K waterproof certified - the highest heat and water pressure test
- Fully waterproof receiver/collar and transmitter
- One-charging system allows the transmitter and receiver to be charged at the same time
- Easily visible blue LCD screen displays the exact level of stimulation that can be seen in the dark
- A three bar battery life indicator and LED colored indicator to show the remaining battery life
- Enhanced contact points
- For dogs as small as 35 pounds

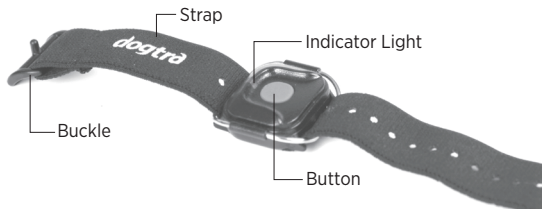
OVERVIEW



**1900S HANDSFREE
Transmitter**



**1900S HANDSFREE
Receiver/Collar**

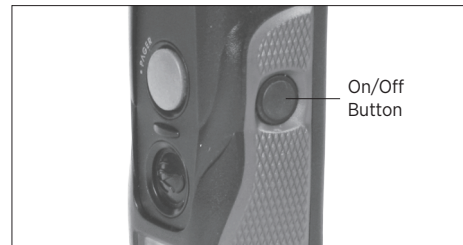


**1900S HANDSFREE
Handsfree Remote Controller**

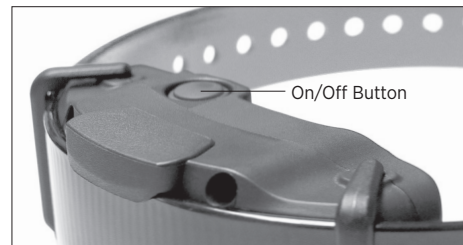
UNDERSTANDING YOUR TRAINING SYSTEM

1. Turning the 1900S HANDSFREE On/Off

To turn the handheld transmitter on, hold down the button on the right side of the transmitter until the LCD screen illuminates. To turn the transmitter off, hold down the same button on the right side of the transmitter until the LCD screen shuts off.

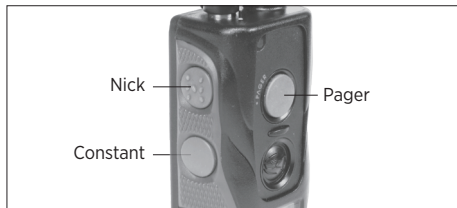


To turn the receiver/collar on, hold down the on/off button until the LED indicator turns green. To turn the receiver/collar off, hold down the on/off button until the LED indicator turns red.



2. Transmitter Button Function

The 1900S HANDSFREE unit has four buttons on the handheld transmitter (one on the face of the transmitter, two on the left side, and one on the right side).



Nick Button

The Nick button is located on the top of the left side of the handheld transmitter. When the Nick button is pressed, the receiver emits a single rapid pulse of electrical stimulation.

Constant Button

The Constant button is located on the bottom of the left side of the handheld transmitter. Pressing the Constant button gives continuous stimulation as long as the button is pushed, for up to 12 seconds. If the button is not released after 12 seconds, the stimulation will automatically turn off as a safety feature. The collar will be ready to be reactivated once the button has been released.

Pager Button

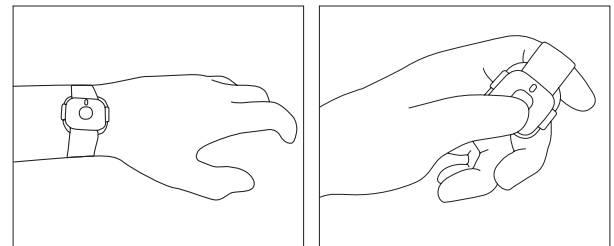
The Pager button is located on the face of the transmitter. Pressing it will give a vibration for as long as the button is pressed, for up to 12 seconds

On/Off Button

The on/off button is located on the right side of the transmitter.

3. Handsfree Information

The Handsfree Remote Controller gives you the freedom to multi-task and have discrete fingertip control of the 1900S HANDSFREE. The function (Nick, Constant, or Pager) can be coded to the Handsfree Remote Controller for you to operate remotely. You may press the Handsfree Remote Controller button instead of having to carry the transmitter in your hand.



The Handsfree Remote Controller has been tested and can be used in extreme conditions, between -4 °F to 140 °F

Range

Depending on where the handheld transmitter is placed, your body can act as a barrier between the Handsfree Remote Controller and the transmitter. The handheld transmitter's antenna should be kept in the open for maximum range. Placing the transmitter in the bottom of a bag or in a cargo pocket where the antenna is covered may reduce the range between the transmitter and the receiver/collar. The Handsfree Remote Controller will need to be within 33 feet of the of the transmitter to work.

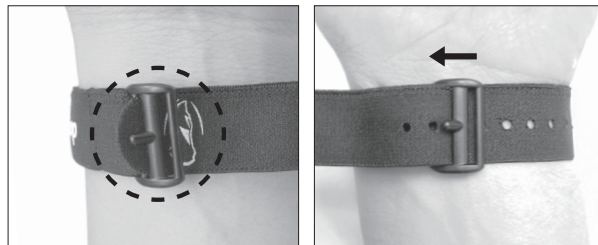
Battery Life

The LED on the Handsfree Remote Controller will blink when the button is pressed. Replace the battery in the Handsfree Remote Controller when the LED no longer blinks. With normal usage (button held for 12 seconds, 100 times a day), the battery should last 7-10 years.

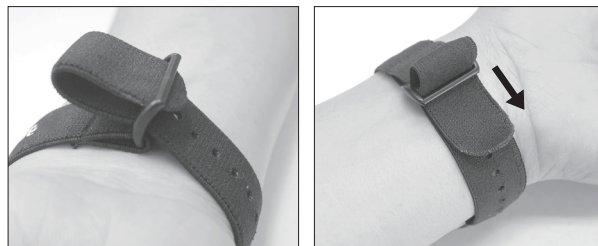
Fastening the Handsfree Remote Controller Strap

The Handsfree Remote Controller strap can be fastened to your fingers, wrist, palm, or around a gun stock. Follow the fastening instructions below.

1. Wrap the strap around the object you are fastening the strap to. Pull the strap through the lower section of the buckle and use the notch to keep the Handsfree Remote Controller securely in place.



2. Loop the strap back through the top section of the buckle.



Changing the Handsfree Remote Controller Stimulation Mode

The default setting for the Handsfree Remote Controller button is the Constant stimulation.

To change the setting to the Pager or Nick stimulation (or back to Constant stimulation) proceed with the following steps:

1. Begin with the transmitter turned off.
2. On the handheld transmitter, hold down the following buttons to code the desired function on the Handsfree Remote Controller.
Constant = Hold down the on/off button only
Pager = Hold down the on/off button and the Pager
Nick = Hold down the on/off button and the Nick
Hold down these buttons until you see a rapid blinking light on the transmitter.
3. Once you see the rapidly blinking light, release the buttons.
4. Hold down the Handsfree Remote Controller button until the rapidly flashing light on the transmitter and controller both show a solid light.
5. Release all buttons. The Handsfree Remote Controller should now be coded.



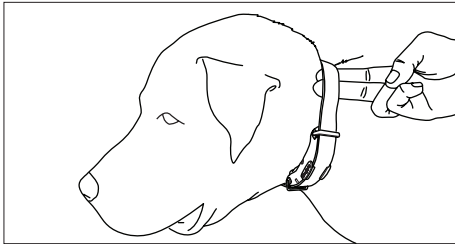
4. Collar Fitting

Proper Fit

The collar should be fitted so that the surgical stainless steel contact points press firmly against the dog's skin. You should be able to fit a finger in between the contact point and your dog's skin. The best location is on either side of the dog's windpipe.

Improper Fit

A loose fit can allow the collar to move around on the dog's neck. When this happens, the contact points may rub against the skin and cause irritation. If the collar is too loose, the contact will not be consistent and cause the corrections to be inconsistent. Dogtra uses surgical stainless steel contact points and anti-microbial plastic to protect the dog's skin.



Attention!

Leaving the receiver/collar in the same location on the dog's neck for an extended period of time can cause skin irritation. If the dog is to wear the e-collar for long periods, occasionally reposition the collar so that the contact points are moved to a different location on the dog's neck. Make sure you check for skin irritation each time you use the unit.

5. Finding the Right Stimulation

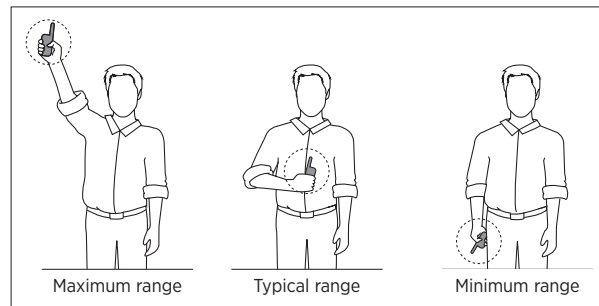
The 1900S HANDSFREE has a Rheostat Dial on the top of the transmitter (0 is the lowest and 127 is the highest). Remember that you will need to adjust the setting (upward or downward) depending on your dog's temperament and threshold for stimulation. Always start at the lowest level and work your way up. The appropriate level can be found when the dog responds to the stimulation with a mild reaction. Also, as the dog's attitude changes, especially during times of increased excitement or distraction, you may need to adjust the intensity level.

Note: The stimulation intensity can be adjusted even when the stimulation is in use.

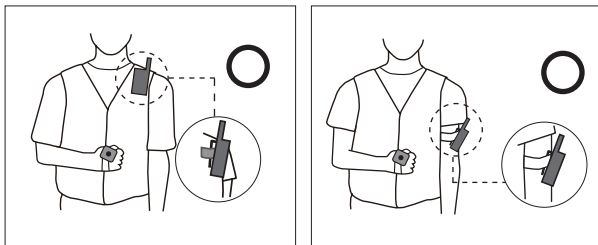
6. Maximizing the Distance

The 1900S HANDSFREE collar has a 3/4-mile range. Depending on the way you use your transmitter, the transmitter range may vary.

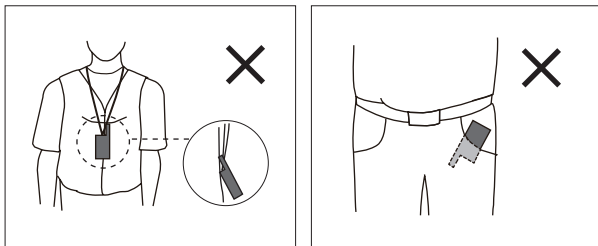
To get the greatest range, hold the transmitter away from your body and avoid touching the antenna. Keep your unit properly charged for maximum signal strength.



The range on the 1900S Handsfree Remote Controller is reduced when the handheld transmitter's antenna is covered or in contact with your body. Refer to the following carrying methods for optimal range.



Carry the handheld transmitter with the antenna facing away from you.



Do not place the handheld transmitter with the antenna touching your body or facing downwards.

7. LED Indicator

The LED indicator flashes every 5 seconds when the receiver is on and ready for use. The LED indicator will blink on both the transmitter and the receiver when the transmitter buttons are pressed.

The LED indicator color indicates the battery life level.

Green = Full charge

Amber = Medium charge

Red = Needs charge

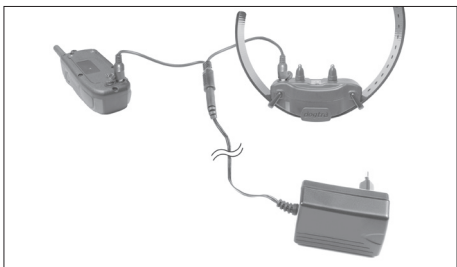
If the unit is used while the LED indicator is red, it may shut down automatically.



Receiver Indicator Light

When the Constant button on the transmitter is pushed, the collar indicator light will glow steadily (either green, amber, or red based on the remaining battery life), as long as you hold the button down, for up to 12 seconds. When the Nick button is pushed, the light comes on for a fraction of a second.

8 Charging the Battery

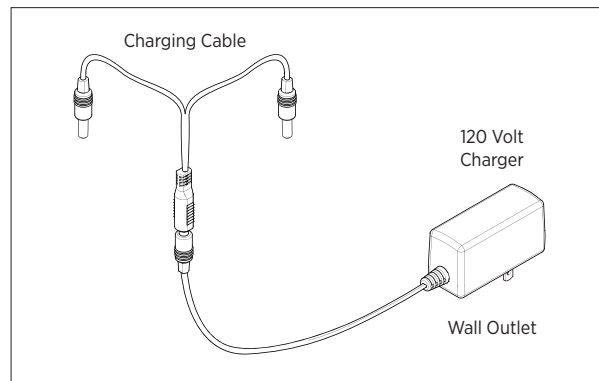


1. Charge the unit before using the unit for the first time.
2. Do not charge the batteries near any flammable substances.
3. Fully charge the batteries if the unit is to be stored without use for a period of 3 months or more.

Recharge the Unit If :

- The LED indicator light on the receiver/collar is emitting a red color.
- If the 3 bar indicator on the transmitter LCD shows just 1 bar.
- The indicator light on the transmitter or receiver will not come on.
- The indicator light on the transmitter or receiver comes on momentarily, but will not stay on when the Constant button is pushed.

Battery Charging Procedure



The 1900S HANDSFREE uses lithium-polymer batteries.

The battery charger and charging cables allow you to charge both the transmitter and receiver at the same time. The battery charger is designed for a 120 volt wall outlet.

Note 1: Only use Dogtra-approved lithium polymer batteries and chargers for your Dogtra e-collar. This will prevent any damage that can be incurred from attempting to use a different charger.

Note 2: The unit has a partial charge when it leaves the Dogtra facility. Upon receipt of the collar, be sure to give it a full 2-hour initial charge before the first use. When a charger is not in use, disconnect it from the power source.

1. Attach the charging cables to both the transmitter and receiver, as shown above.

2. Plug the charger into a 120 volt wall outlet or, if using the auto charger, plug into a cigarette lighter only for lithium polymer batteries (use a 230 volt European charger for Europe). All indicator lights should glow red when properly plugged in and the unit will automatically shut off during the charging process. You will need to turn the unit on again before use once the unit is fully charged and unplugged from the battery cable.
3. The lithium polymer battery is fully charged within 2 hours. The lights will stay red during the charging process. The red light will turn green once the unit is fully charged.
4. After charging, cover the battery charging receptacles with the rubber plugs on the transmitter and receiver.

9. Handheld Transmitter LCD



The LCD screen indicates the stimulation level on the screen ranging from (0-127). The battery life indicator shows: 3 bars = full charge, 2 bars = medium charge, 1 bar = needs charge.

The battery life indicator only shows the remaining charge of your transmitter. To find the remaining charge for your receiver/collar, observe the LED indicator light on the receiver/collar.

To turn the LCD back light on and off, shortly press the on/off button.

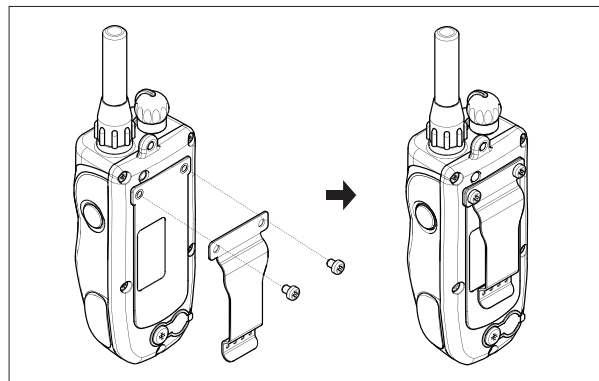
Care for LCD Transmitters in Cold Temperature

In cold temperatures (10°F or below), the Liquid Crystal Display (LCD) on your transmitter may be dim or slow to respond. Wait until the display becomes visible before selecting any training level. Even though the LCD screen might be dim or slow to respond when you push the Nick or Constant button, the transmitter will still function properly. In the occurrence of extremely cold weather, the LCD screen might take a moment to respond causing the intensity level to freeze at that current level. If you turn the Rheostat Dial, the level on the screen may not change but the actual intensity from the receiver/collar will change in agreement with the dial. In this situation, it is ideal to either wait until your transmitter is back in working order before emitting a correction or while holding the Constant button down, slowly turn the Rheostat Dial while watching your dog's reaction. Do not turn the Rheostat Dial rapidly, because the receiver/collar will emit a static correction based on the level of the Rheostat Dial, which might not be correctly reflected on the LCD screen.

Attention!

When using the unit in cold temperatures, it is recommended that the transmitter is placed under your jacket next to your body. The warmth of your body will greatly improve the battery life and usage.

10. Attaching the Belt Clip



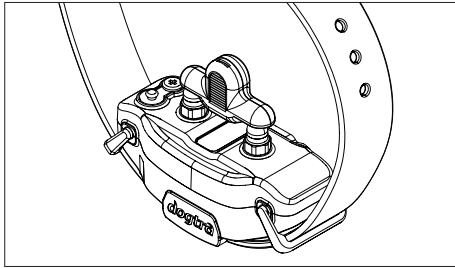
Follow the instructions below to attach the included belt clip to the transmitter.

1. Align the belt clip to the grooves on the back of the transmitter.
2. With a firm grip, screw on the belt clip's Phillips head screws with a screwdriver.

Caution!

Tighten until firmly in place. Be careful not to over tighten.

11. Using the Test Light



1. Turn on the receiver/collar by pressing the on/off button. The indicator light will come on for a moment then blink once every 5 seconds, showing that the collar is ready to use (the receiver needs to be charged if the indicator light is red).
2. Turn the transmitter on by holding down the on/off button on the right side of the transmitter. The LED will blink every 5 seconds and the LCD screen will show the remaining battery life (the transmitter needs to be charged if there is only 1 bar showing on the battery icon for the LCD transmitter screen).
3. Place the test light, included in the package contents, on the contact points as shown in the diagram.
4. Watch the test light as you push the Nick button on the transmitter. It should light up for just a moment. The higher the intensity, the brighter the test light will be.
5. Watch the test light as you push the Constant button on the transmitter. It should light up as long as the button is pressed. However, as a safety feature, the receiver/collar will automatically stop the stimulation if

the Constant button is pressed for 12 seconds or longer.

6. Turn the Rheostat Dial on the transmitter clockwise and then counterclockwise. The test light should glow brighter with higher levels of stimulation and dimmer with lower levels.

Note: The test light may not be visible if the intensity level is set below level ten.

GENERAL TRAINING TIPS

Your dog must know some basic obedience commands before beginning training with the 1900S HANDSFREE. A dog learns by first being shown a command, followed by lots of repetition over an extended period. As the dog becomes proficient at these commands, the trainer can introduce distractions and different locations to strengthen them.

Obedience Training on the Leash

Your dog must fully understand the obedience commands (sit, stay, here, heel, and kennel) before using the e-collar for reinforcement of these commands. A leash attached to a standard collar is used to "teach" the dog the basic obedience commands (here, heel, sit, and stay). A tug on the leash/collar is used to reinforce the command. When the dog complies with the command, use positive reinforcement/praise. Once the dog understands these commands, the e-collar can be used to reinforce them.

Beginning E-Collar Training

When you feel your dog understands the obedience commands on the leash we can now start with the e-collar training. With the dog on the leash and wearing the e-collar, continue with your obedience drills. Apply light stimulation (Nick or Constant) when a command is given; the stimulation can be removed as the dog complies. Through repetition, the dog learns to perform the command.

The final step is the avoidance phase in which the dog learns that he can avoid the stimulation altogether

by performing your commands. When these training procedures are complete, the e-collar is used as a reminder when the dog does not comply with your commands at home or in the field. Keep your initial training sessions short and positive as dogs have a short attention span.

How Much Stimulation to Use

Always start with low levels of stimulation and work your way up depending on the disposition of your dog and the given situation. By using the correct amount of stimulation to get your point across, you will have a more controllable environment and a dog that is under less stress. Animals (and humans) perform better in a less stressful environment.

For more training information, please visit our website at www.dogtra.com.

MAINTENANCE

Basic Maintenance

Be sure the rubber charging cap is securely in place when the collar is in use. After each training session, carefully inspect the unit for any missing parts or damage to the casing. Damaged or broken casing may affect the waterproof guarantee on the unit. After confirming that there is no damage to the casing, rinse the receiver/collar and clean out any dirt or debris.

Storage Maintenance

The 1900S HANDSFREE should be fully charged before storing for extended periods. While in storage, the unit should be given a full charge once a month and before the first use. Store the units in room temperature. Do not keep the units exposed to extreme climates.

Troubleshooting

If the unit is malfunctioning, please refer to the “Troubleshooting Guide” before sending it to Dogtra for service. If you have any questions or concerns, you may email them to info@dogtra.com, or call customer service at 1-888-811-9111.

FCC WARNING

The 1900S HANDSFREE complies with part 15 of the FCC Rules. Operation is subject to the following two conditions:

- (1) This device may not cause harmful interference, and
- (2) This device must accept any interference received, including interference that may cause undesired operation.

This is a sensitive radio device. Any unauthorized changes or modifications to this device that are not expressly approved by Dogtra will void the warranty and may void the user’s authority to operate the equipment. Please do not tamper or modify the unit.

TROUBLESHOOTING GUIDE

1. My dog is not reacting to the collar.

- Make sure the receiver and transmitter are turned on by holding down the on/off button on each device until the LED lights up.
- Be sure the collar strap is tight enough so both contact points are touching the dog's skin.
- The contact points may be too short for the dog. To place an order for longer contact points that are more appropriate for your dog, please call (888) 811- 9111. If you are already using the longest contact points available, you might need to trim down the hair on the dog's neck so both contact points are touching the dog's skin.
- The intensity level may be too low for your dog. Keep increasing the stimulation until the dog responds, usually with neck movement, head shaking, looking over its shoulder, etc. (response may be very subtle).

2. The test light comes on, but I do not feel any stimulation.

- Your tolerance may be higher than your dogs. We recommend placing both contact points on your inner wrist, where the sensitivity is higher, in order to test the unit.
- The battery may be low, so check the LED light for battery life.

3. The transmitter has no range or stimulation is less

when the dog is farther away.

- The antenna(s) may be damaged. To order parts, please contact customer service at (888) 811- 9111 or go to www.dogtra.com.
- The range indicated on the unit's box is for flat terrain. Heavy brush, trees, hills, or moisture will affect the range of your unit. For best range, hold the transmitter vertically above your head, and/or try moving to higher ground.
- Any electrical conductors will affect the range, such as cars, chain-link dog runs, metal structures, and radio towers. For best results, operate away from these items.

4. My unit is not holding a charge.

- The batteries might not be charged properly, or the charger, splitter, and the charging port may not be functioning properly. You can send in your charging units to have us inspect them.
- The charging pin may be damaged. Inside the charging port, there is a metal pin that should be standing straight up and stiff. If the pin is wobbling, broken, or missing, you will need to send the unit in to the Repair Department. The charging port must be clean prior to charging; clean the dirt out with a cotton swab and some rubbing alcohol. If the dog is in salt-water, be sure to rinse the receiver and charging port with clean water.
- If the above does not resolve your issues, contact Dogtra customer service at info@dogtra.com or (888)-811-9111.

WARRANTY AND REPAIR INFORMATION

2-Year Limited Lifetime Warranty

Dogtra provides the original purchaser with a 2-Year Limited Lifetime Warranty for the 175NCP, 180NCP, 200NCP Gold/C Series, 210NCP Series, 280NCP/C Series, 300M Series, 1400NCP Series, 1500NCP Series, 1600NCP Series, 1700NCP Series, 1800NC Series, 1900NCP/S Series, 2000T&B Series, 2200NCP Series, 2300NCP Series, 2500T&B Series, 2700T&B Series, 3500NCP Series, SureStim Series, ARC Series, COMBO and the EDGE RT. The warranty begins from the date of purchase. For the first two years, coverage is for both parts and labor on warranty repair services.

Accessories such as chargers, splitter cables, antennas, straps, and batteries are covered for the first year only. After the first two years, the Limited Lifetime Warranty covers parts only and does not cover labor fees and accessories. All shipping fees incurred, the cost of the accessories after the first year, and labor fees associated with out of warranty repair work are the customer's responsibility. Labor fees will be variable depending on the extent of the work required. The Limited Lifetime Warranty expires 5 years after a model is discontinued from production by Dogtra.

To Qualify for the Dogtra Warranty

All products must be registered and/or a proof of purchase is required to initiate repair work under warranty. To register your Dogtra product, log onto our website at www.dogtra.com, click on the warranty registration link, and fill out the required information. Registration must be completed within 30 days of purchase. If you do not have access to a computer, you can call our toll free number at 1-888-811-9111, and one of our customer service representatives will register the product for you. If you were unable to register your product within 30 days of purchase, we will accept all products for repair with a proof of purchase. We strongly recommend keeping the original receipt. If your product is not registered and a proof of purchase is not available at the time of service, Dogtra will estimate the age of the unit by the serial number. Serial number estimates can differ from the actual purchase date. A serial number estimate is the only method of determining an approximate date of purchase without product registration or a proof of purchase.

Not Covered Under Warranty

Dogtra DOES NOT offer warranty for products that have been bought secondhand or as a resold product. Dogtra DOES NOT replace defective

units or provide refunds for products purchased from us after 30 days from the date of purchase. Dogtra DOES NOT cover the cost of shipping outside of the Continental United States. Issues of replacement and refunds on units purchased less than 30 days from an authorized dealer must be addressed to the dealer directly. If the products purchased from an authorized dealer are after 30 days from the date of purchase, please send the units to Dogtra for service and repair.

Dogtra DOES NOT cover the cost of repairs and replacements due to misuse by the owner or dog, improper maintenance, and/or lost units. Any water damage on the water resistant transmitters of the 175NCP, 180NCP, 200NCP Series, 1400NCP Series, 1500NCP Series, iQ Pet Series, HANDSFREE remote controller, and BALL TRAINER, and the water resistant receivers of the RRS, RRD, RR DELUXE, and BALL TRAINER, will not be covered. All replacement costs for either the transmitter or receiver will be the owner's responsibility. The warranty is void if the unit has been altered or an unauthorized person has damaged the unit while attempting repair work. Battery replacement by the customer during the first year of the 2-year Limited Lifetime Warranty is not recommended. If the customer chooses to replace the batteries, any damage to the unit during the change-out by the owner will void the warranty. The removal of serial numbers from any Dogtra products will void the warranty. Dogtra reserves the right to retain and discard any parts or accessories that have been found damaged upon replacement and repair.

Procedure for Repair Work

If the unit is malfunctioning, please refer to the "Troubleshooting Guide" in the Owner's Manual and call customer service at 1-888-811-9111 for technical support before sending it to Dogtra for service. The cost of shipping products under warranty back to Dogtra is the customer's responsibility. Dogtra is not responsible for units damaged or lost in transition to Dogtra. Dogtra is not responsible for loss of training time or inconvenience while the unit is in for repair work. Dogtra does not provide loaner units or any form of compensation during the repair period. A copy of the sales receipt showing the purchase date may be required before warranty work is initiated. Please include a brief explanation outlining the problem and include your name, address, city/state/zip code, daytime phone number, evening phone number, and email address. Or you can visit our website at www.dogtra.com for a service request form. If the repair costs are not covered under warranty, we will call you for payment information and authorization. For any questions concerning your Dogtra products, call us toll free at 1-888-811- 9111, M-F 8:00AM - 4:30PM Pacific Standard Time, or email us at repair@dogtra.com for specific repair inquiries.

**Send repair units to :
Dogtra Company / Repairs
22912 Lockness Avenue,
Torrance, CA 90501
U.S.A.**

The diagrams and representations in the manual may differ slightly from the actual product depending on the model type.